

Yakima-Tieton Irrigation District

Photo Recap & Update

Thank You

FOR YOUR SUPPORT



Wednesday, December 18, 2024

Dear stakeholders, partners, and supporters,

As the year ends, I want to take a moment to express my sincere gratitude for all the support we've received during what has been a very challenging time for our district. This summer's events pushed us into uncharted territory, and while the work isn't done, I'm proud of the progress we've made together.



Travis Okelberry, YTIM District Manager

Thanks to the tireless efforts of our crews, engineering team, and the guidance and help from so many of you, we've stabilized critical areas of the canal. So far, nearly 6,000 linear feet of cover have been installed, and we're on track to hit 7,000 by the end of the year.



Aerial view large burned area west of Windy Point campground and canal that is now covered.



Before: Burned trees fall on top and into canal posing serious risk of catastrophic failure. Dozens have been removed but thousands of dead standing trees remain a threat.



After: One section of the 6,000 linear feet of new cover installed. 10,000 feet of vulnerable area identified as highly vulnerable areas.

Update, Cont.

Excavation at key sites is almost finished, and we're continuing to look at additional measures, like debris fencing and securing an emergency pipe bridge, to prepare for whatever comes next.

We know there's still work to do. This winter's weather is already presenting challenges, with rain and snow combining to test the ground conditions and infrastructure. But we're staying optimistic and prepared as we focus on getting through the season. **Our goal remains clear: to be ready for a strong start next spring, with no shutdowns or curtailments for the communities we serve.**



Before: Pipe bridge #1 with insufficient clearance for potential upcoming flooding & debris flow.



During Construction: Pipe Bridge #1 excavating an original drainage channel to increase clearance.



After: Pipe bridge #1 Now with adequate space to permit debris and water to pass underneath.



Before: Pipe bridge #2 upstream channel at risk and highly vulnerable to spring flooding and debris blockage.



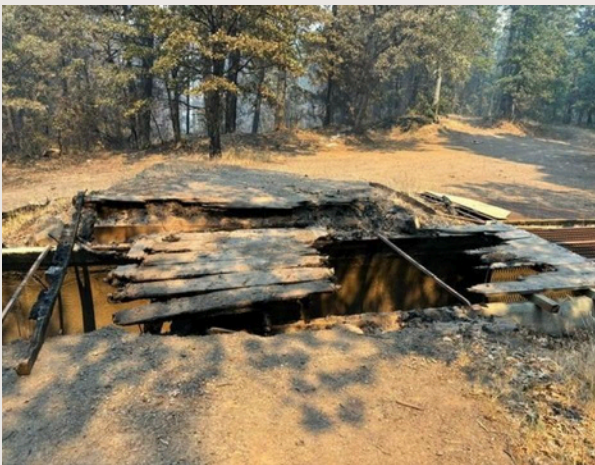
After: Pipe bridge #2 Significant material removed and channel open. (Note previously covered boulder).



Our experiences this year have highlighted the critical vulnerabilities in our system and the importance of moving towards a long-term solution. Replacing this aging infrastructure is a monumental task, but it's one we're committed to seeing through, and we'll continue pursuing every avenue to secure the funding and support needed to make it happen.

On a personal note, this year has been incredibly stressful. The damage from the Retreat wildfire and the challenges faced shortly after my first year as district manager have been humbling. Despite these difficulties, I'm **inspired by the resilience and dedication of our team, the commitment of our community, and the incredible support we've received from people like you.**

So, on behalf of everyone at Yakima-Tieton Irrigation District, thank you. Your support - whether it's financial, technical, or simply encouraging words - has meant the world to us. **We couldn't have come this far without you, and we're truly grateful.**



Before: Bridge destroyed preventing access to canal.



After: Bridge rebuilt by district crews.



Before: All timber structures were lost in the fire, including cribbing meant to keep the weight of heavy cover off of the canal.



After: Timber cribbing re-installed at many locations to keep heavy decking from resting atop canal.



We're heading into the holidays with good spirits, knowing we're in this together and looking forward to continuing the challenging work in the new year.

I wish you and your families a peaceful holiday season and a happy start to 2025.

*Warm regards,
Travis Okelberry*

*District Manager
Yakima-Tieton Irrigation District*



Before: Unstable burned terrain causing boulders to roll down the hill into the canal; conditions are anticipated to worsen in the spring due to lack of vegetation.



Boulder damage to canal.



The boulder that caused the damage.



Washington Conservation Corps (WCC) crews completing wildlife crossings.



WCC crews staging materials for wildlife crossings.